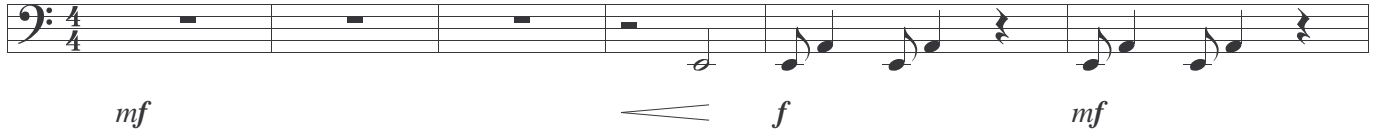


Bertrand the Sailor

Timothy D. Corrie Jr.
Copyright 2008

1



7



15



21



27



32



37



41



48

The bass line of 'The Rose Tree' is written on a single staff. It begins with a treble clef and a key signature of one flat (B-flat). The melody consists of eighth notes: G2 (below the staff), F2 (below the staff), E2 (below the staff), D2 (below the staff), C2 (below the staff), B1 (below the staff), A1 (below the staff), and G1 (below the staff). The melody is repeated twice, with a rest for two measures in between.

48

The bass line of 'The Rose Tree' is written in 3/4 time. It consists of six measures. The first three measures are eighth-note patterns: G2 (quarter), A2 (quarter), B2 (quarter), C3 (quarter), D3 (quarter), E3 (quarter), F3 (quarter), G3 (quarter). The last three measures are whole notes: G2 (half), A2 (half), B2 (half), C3 (half), D3 (half), E3 (half), F3 (half), G3 (half).

$$p \triangleleft f \qquad p \triangleleft f \qquad p \triangleleft f$$

62

[illegible]
$$p \triangleleft f$$
$$p \triangleleft f$$

62

The bass line of 'The Rose Tree' is written on a single staff. It begins with a bass clef and a key signature of one flat (B-flat). The melody consists of the following notes: G2 (quarter), A2 (quarter), Bb2 (quarter), A2 (quarter), G2 (quarter), F2 (quarter), E2 (quarter), D2 (half). The notes are written on the lines and spaces of the staff, with the first four notes (G, A, Bb, A) on the first line and the remaining notes on the first space and the second line.

67

A musical staff in bass clef showing the bass line of the song. The melody consists of the following notes: G2 (quarter), F2 (quarter), E2 (quarter), D2 (half), C2 (half), B1 (half), A1 (half), and G1 (half). The staff ends with a double bar line.

$$ff$$